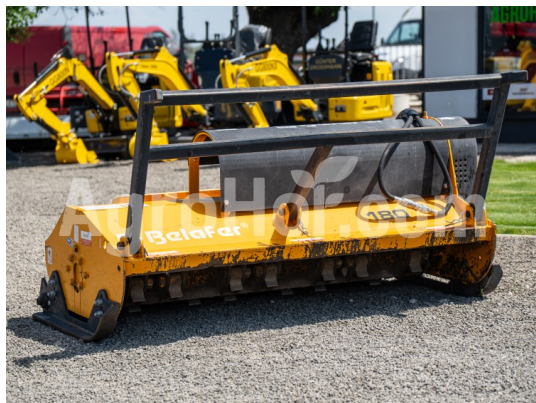


Belafer TBMI 180 (used)

**Hydraulic culture-maintenance crusher and brushcutter (for skid steer loaders)
180 cm (used)**



Company seat

Agrohof Kft.
6064 Tiszaug, Bokros tanya 16.

Sales

+34 667 954 677
info@agrohof.com

<https://agrohof.com/sku/b15-12490>



Parameters

Name	Unit
Working width	1800 mm
Oil flow	45-110 l/min
Hydraulic pressure	200-350 bar
Weight	600 kg
Hammer PCs	28 pcs
Max tree diameter	12 cm

Description

The machine is technically fully operational and ready for immediate work. However, signs of regular use (surface paint wear, scratches on the chassis, and marks from stone impacts inside the crushing chamber) are visible. These aesthetic imperfections do not affect the structural integrity or the excellent performance of the machine.

Technical Specifications and Features:

- **Manufacturer / Model:** Belafer TBMI 180
- **Working width:** 180 cm
- **Weight:** 600 kg
- **Required hydraulic pressure:** 200 - 350 Bar
- **Required hydraulic flow:** 45 - 110 L/min
- **Number of blades / hammers:** 56 knives / 28 hammers (Floating hammer rotor, where the hammers oscillate 360° on the rotor discs)
- **Maximum crushing diameter:** up to 12 cm in branch diameter
- **Compatibility:** Designed to be coupled to skid steer loaders (mini-loaders) with rubber or mixed tracks between 2.5 and 4 tons
- **Chassis:** Wear-resistant chassis plate
- **Drive system:** Unidirectional or reversible hydraulic motor, transmission by pulleys and belts
- **Safety:** Spray-proof front protection chains
- **Terrain tracking:** Rear adjustment roller
- **Optional equipment included:** Hydraulic sideshift (allows the machine to be brought closer to the side of the road or obstacles)

Terms of Offer and Inspection: The machine can be inspected and tested at our premises by prior appointment. Being a used machine, the price reflects its current aesthetic condition as shown in the pictures.

If you are interested or have any questions, please feel free to contact us!